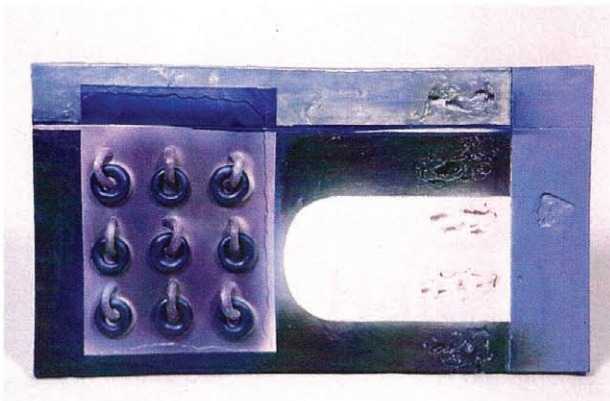


Kellie Miller

Ceramic

Kellie Miller is renowned for her ceramic vessels and wallpieces. The unique quality of her work has developed over time and is attributed to her influences of the work of William Scott, Antoni Tapies and Ben Nicholson; together with her years of training at Wimbeldon School of Art, Camberwell School of Art, the university of Brighton and her MA in Arts Criticism at City University, London.



Kellie Miller

Her vessels and wallpieces have a constant repetitiveness. This theme is reflected in the visual content, as well as in her main making process of combining hand building techniques with slip casting; thus creating limited edition designed forms, which are unique in surface decoration.

Concepts behind Kellie Miller's work are concerned with notions of hybridity and relationships. The dialogue between each form is emphasised by space, decoration, coupling and grouping, creating an interdependency between the objects. Equally important to the finished piece is her use of glaze and colour.

Throughout Kellie Miller's career she received support and funding from Southeast Arts, American Express

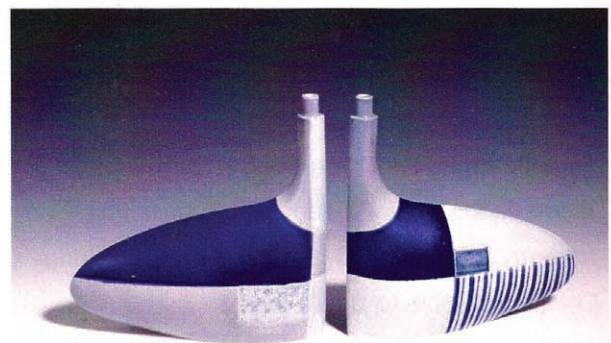
and The Prince's Trust. She had solo shows in Germany, Copenhagen and London and has also exhibited extensively in the UK.

In the year 2003, Kellie Miller received sponsorships from the Arts Council of England, the Southeast Arts, private collectors and ANA Airlines to spend four months in residency at the International Ceramic Cultural Centre in Shigarki, Japan. Since then she has created new sculptural work.

Kellie Miller is a highly accomplished ceramist who is continuously experimenting new ideas and concepts in her art.

Visit Kellie Miller Studio at Biscuit Studio, 12b Wilbury Grove, Hove BN3 3JQ. Tel: 01273 720625.

www.kelliemillerceramics.co.uk



Kellie Miller